

Cooke / f Technology Release Notes + FAQs

1. What's new with firmware version x.35?

- Improved timing
- Updated shading data

2. Can I update all my Cooke / f lenses with the latest firmware?

- Lenses that have electronics boards with inertial sensors (/ f^2 & / f^3 firmware versions) should be updated to the newest firmware versions shown in **red** in the table below.
- Older S4/ f lenses with firmware 0.29 or 0.39, 5/ f with firmware 5.03, miniS4/ f with firmware 8.02, and Anamorphic / f with firmware 5.03 cannot be updated to the newest firmware.
- Older S4/ f lenses with firmware versions below 0.29 (10-bit board) or below 0.39 (12-bit board) should be updated to versions 0.29 or 0.39. Instructions for older lenses can be downloaded [here](#).

Lens type	/ f (10 bit)	/ f (12 bit)	1 st / f^2	2 nd / f^2	3 rd / f^2	1 st / f^3	2 nd / f^3
			Inertial data	Expanded film size + shading data	Angle data	Distortion data	Improved timing and updated shading model
S4/ f	0.29	0.39	4.21	4.22	4.23	4.33-4.34	4.35
CXX Zoom	1.29	1.39					
5/ f		5.03	5.21	5.22	5.23	5.33-5.34	5.35
miniS4/ f		8.02					
Anamorphic / f		5.03	9.21	9.22	9.23		9.35
Anamorphic / f SF			9.21	9.22	9.23		9.35
PANCHRO/ f Classic			3.21	3.22	3.23	3.33-3.34	3.35
S7/ f			7.21	7.22	7.23	7.33-7.34	7.35
Anamorphic / f 35-140			9.61	9.62	9.63		9.75

Anamorphic /85 Full Frame Plus			7.61	7.62	7.63		7.75
Anamorphic /85 SF Full Frame Plus					7.63		7.75

5. How do I check which firmware is in my lens?

- The Cooke Lens Viewer display program runs on a Windows or Mac computer and can be used to view lens data and check firmware version. It can be downloaded from the Cooke Optics [website](#). You will need an /85 Data cable to connect lens to pc.
- Note: miniS4/85 lenses need both the /85 Data cable and an /85 Update base to view lens data. The miniS4/85 lenses do not have a side lemo connector so the metadata can only be accessed through the PL mount.
- Please contact lenses@cookeoptics.com if you need to order the /85 Data cable or /85 Update Base.

6. How do I use the Cooke /85 Technology Data Cable?

- You can find instructions on how to use the /85 Data cable [here](#).

7. How do I update the firmware in my /85 lens?

- You can download instructions to update the firmware in your lens [here](#). The instructions include links to the program and firmware files you will need.
- After you perform the firmware update, you will also need to run the Cooke Calibration program. Instructions to run the calibration program can be downloaded [here](#). These instructions include links for the program and files you will need.
- Note: The Cooke firmware update program and calibration program only run-on Windows operating system.

8. How do I check the /85 lens data in my lens to make sure it is working correctly?

- The Cooke Lens Viewer Display program runs on a Windows or Mac computer and can be used to view lens data and verify your lens is functioning correctly. It can be downloaded from the Cooke Optics [website](#). You will need an /85 Data cable to connect lens to pc.
- Note: miniS4/85 lenses need both the /85 Data cable and an /85 Update base to view lens data. The miniS4/85 lenses do not have a side lemo connector so the metadata can only be accessed through the PL mount.
- Please contact lenses@cookeoptics.com if you need to order the /85 Data cable or /85 Update Base.

9. The aperture / focus / zoom positions do not all line up with the ring marks on my lens. How can I correct them?

- Cooke provides a Calibration program that can be used to re-calibrate the focus, aperture and zoom rings on a Cooke lens. Instructions to run the calibration program can be downloaded [here](#). These instructions include links for the program and files you will need.

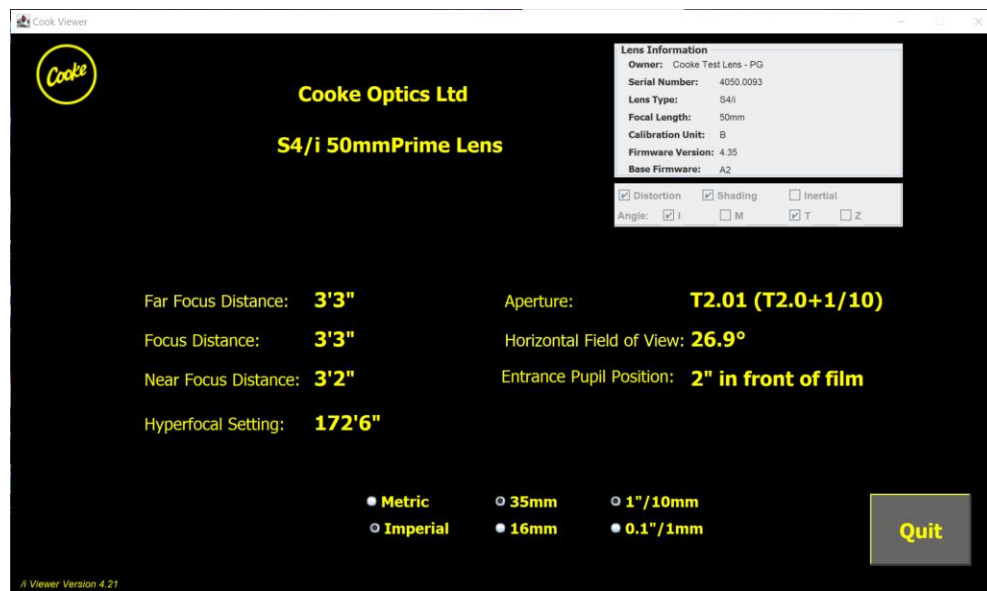
- The Calibration program only runs on Windows operating system.
- You will need an $\frac{1}{8}$ " Data cable to connect lens to pc.
- Note: miniS4/ $\frac{1}{8}$ " lenses need both the $\frac{1}{8}$ " Data cable and an $\frac{1}{8}$ " Update base to view lens data. The miniS4/ $\frac{1}{8}$ " lenses do not have a side lemo connector so the metadata can only be accessed through the PL mount.
- Please contact lenses@cookeoptics.com if you need to order the $\frac{1}{8}$ " Data cable or $\frac{1}{8}$ " Update Base.

10. How do I update my lens after installing a new electronics board?

- The board will come preinstalled with firmware at a default focal length. Follow the directions to calibrate lens and set the correct focal length described in the instructions [here](#).

11. How do I know if my lens has inertial data, shading and distortion data?

- Look at the information shown in the upper right-hand corner of the Cooke Lens Viewer Display program 4.2.3. You will see a check in the box next to Distortion, Shading and Inertial labels if that data is available with your lens.



12. Where can I find documentation on the latest $\frac{1}{8}$ " Technology features?

- You can download the public $\frac{1}{8}$ " Technology documentation from [here](#).

13. Is it possible to retrieve the distortion files and then map them in post with focus data?

- Yes. Shading and distortion maps for our spherical lenses can be retrieved from the cloud by entering the lens serial number. You can do this from our website: <https://www.cookeoptics.com/i/itech.html> or directly from Amazon database: <https://d1h2cw6ugwvjin7.cloudfront.net/>

14. How do I know if my lens can work with ARRI wcu-4 unit?

- Look at the information shown in the upper right-hand corner of the Cooke Lens Display program. You will see checks in boxes next to the Angle label, (I for Imperial focus, M for metric focus, T for T-stop, Z for Zoom) if that data is available with your lens.